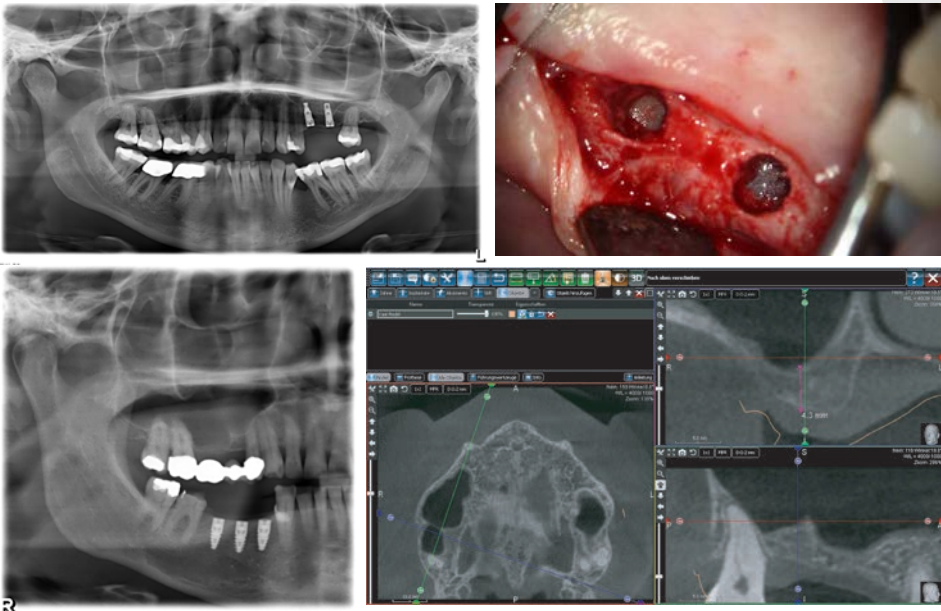




TRI ACADEMY ONLINE-WEBINAR

MINIMALLY INVASIVE SINUS FLOOR ELEVATION BY UTILIZING THE TRI® DENTAL IMPLANT SYSTEM IN COMBINATION WITH THE JEDER SYSTEM

Andreas van Orten, M.Sc. (Germany)



12th SEPTEMBER | 12:00 CEST

Learning Points

- Alternatives to a lateral window approach
- Crestal sinus approach without using osteotomes
- Alternatives to classical bone substitute materials



Andreas van Orten,
M.Sc. (Germany)



Holger Kast
Global T&E Manager/
Dental Technician

Duration	1 hour
Language	English
Price	Free of costs

[CLICK HERE TO REGISTER →](#)

CONNECT WITH TRI®
E-LEARNING WITH EXPERTS
FROM AROUND THE WORLD

EDUCATION PROGRAM 2018

[CLICK HERE TO SEE MORE →](#)



#tridentalimplants
www.tri.swiss

Designed and Manufactured by TRI® in Switzerland

